

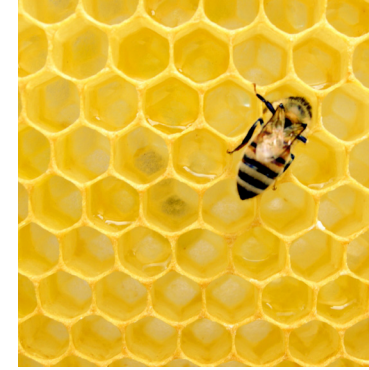
# LITTLEHAMPTON MUSEUM

ENTOMOLOGY



# WHAT IS ENTOMOLOGY?

The scientific study of insects, an Entomologist is a scientist who studies insects.



# WHAT MAKES AN INSECT?

Insects are part of the mini beast family, they are, by far, the most common animals on the planet.

Insects are *invertebrates*, which means they do not have a back bone. They have six legs, antennae and three body sections (a head, a thorax and an abdomen).

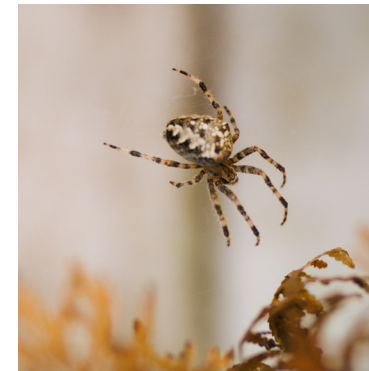
# AM I AN INSECT?

Here are some mini beasts which are commonly found in the UK, you may have seen them in your garden or local park. Can you tell which are insects and which are not?



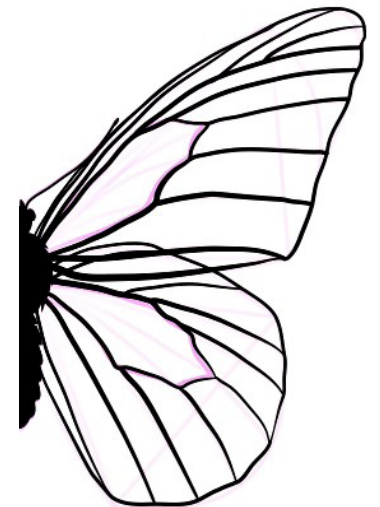
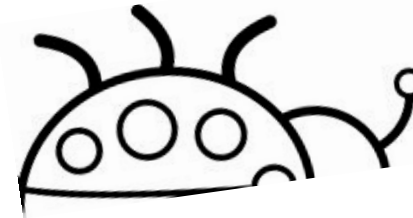
# WHY ARE THESE CREATURES IMPORTANT?

- They pollinate many of our fruits, flowers and vegetables. They also help spread seeds. Without them many things would not grow.
- Many birds, reptiles and other mammals rely on them for food.
- They help break down dead plant and animal matter.





COMPLETE AND COLOUR!



**FUN FACTS** Butterflies have been around for over 56 million years, and live all over the world, except Antarctica.

# HELPING INSECTS

Here are just some of the ways in which you can help, from creating a cosy home to providing a sugary snack...



## BUG HOTEL

- Collect sticks, leaves and dried flower stems, put them together in a pot and you're ready for the bugs to move in.
- Build a pile of logs and bits of wood for woodlice, earwigs and beetles to snuggle down in.
- Make a pile of stones or broken pots and bricks, insects will love the shady spaces and damp soil underneath.
- Get a grown up to drill holes in a log to create homes for solitary bees and spiders.



## TAKE A TRIP

Museums can be a great place to discover some more unusual insects, here are some that have entomology collections on display

🦋 Littlehampton Museum, Manor House, Church Street, Littlehampton. BN17 5EW.  
**Web:** [littlehamptonmuseum.co.uk](http://littlehamptonmuseum.co.uk)

🦋 Booth Museum, 194 Dyke Road, Brighton, BN1 5AA.  
**Web:** [brightonmuseums.org.uk/booth](http://brightonmuseums.org.uk/booth)

🦋 Cumberland House Natural History Museum, Eastern Parade, Southsea, PO4 9RF.  
**Web:** [portsmouthnaturalhistory.co.uk](http://portsmouthnaturalhistory.co.uk)

🦋 Haslemere Educational Museum, 78 High Street, Haslemere, Surrey GU27 2LA.  
**Web:** [haslemeremuseum.co.uk](http://haslemeremuseum.co.uk)

🦋 Natural History Museum, Cromwell Rd, South Kensington, London SW7 5BD.  
**Web:** [nhm.ac.uk](http://nhm.ac.uk)

## TIME FOR A SNACK

- In autumn many butterflies like a sweet treat to keep up their energy levels. Simply cut slices of an old banana or apple and leave it out for them to find.
- In summer create a bee watering station by adding stones for bees to stand on in your birdbath, or filling a saucer with water and pebbles. *Remember to keep it topped up.*



# BUG COUNT

How many can you find in your garden?

Butterfly:

Woodlouse:

Earthworm:

Bee:

Earwig:

Ant:

Moth:

Beetle:

Ladybird:

Spider:

Caterpillar:

Centipede:

Snail:

Slug:



Keep a tally (III II) above!

Littlehampton Museum, Manor House, Church Street, Littlehampton. BN17 5EW.



Funded by The Royal Society  
as part of the Places of Science  
grant scheme.

